

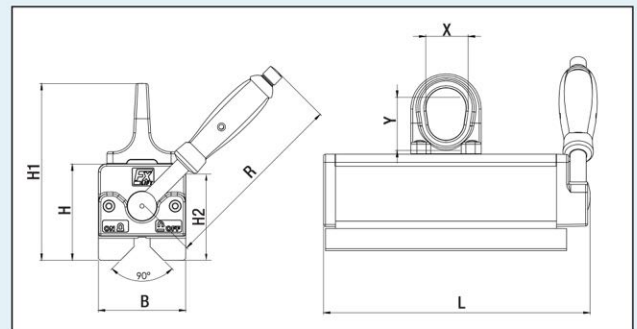
FX-V permanent magnetic lifter with a 90° prism for beams, profiles and high temperature loads



- Thin and long shaped for beams and profile lifting.
- The 90° prism allows safe lifting of curved profiles.
- Stretched protect magnets inserted in the heat core.
- Suitable for handling hot material up to 150°C.



Models	H2 (mm)	IPE	HEB
FX - V200	65	da IPE 80	da HEB 100
FX - V400	87	da IPE 100	da HEB 120
FX - V800	106	da IPE 140	da HEB 160



Models	Max Load Capacity kg			Max Load Capacity from (mm)	Dimensions mm						Weight kg
	plane	circular	90°		L	B	H	H1	R	X/Y	
FX - V200	200 kg	∅ 20-50 mm 100 Kg	120 kg	10	195	64	77	141	134	30/42	5,5
FX - V400	400 kg	∅ 25-60 mm 200 Kg	250 kg	15	265	87	96	176	188	42/53	13
FX - V800	800 kg	∅ 35-75 mm 300 Kg	400 kg	20	352	112	115	210	228	51/62	28

Safety factor 3.5 / Test Method EN 13155 / max. Operating Temperature 80°
Max. temperature of the workpiece 150°/100%

Vega Technik

Ackerweg 9 - 9500 Villach - Austria -
Tel: +43 (0) 4242 211 74 Fax +43 (0) 4242 211 7410
E-mail: info@vegatechnik.com